

P&D Monitoring Report Tunnel Hill 2021-22

Summary

Date
25/01/2022

Monitored By
Alex Mills

Vineyard Summary

Generally good fruitset with a medium density of medium size bunches. Pinot bunches entering veraison. Some hen and chicken will impact yield and evenness of ripening. No urgent pest and disease issues- some common white snails sighted - not many - and some leaves collected to test for Downy Mildew but inot active.



*Looking over 4B Shiraz to block 5
Sauvignon Blanc and Shiraz*



*Pinot 7 fruit zone - beginning of
veraison.*



Looking over Pinot 8 to Pinot 9

GPS Location

Author of this report is Group Logistics Pty Limited and its employees.

Disclaimer: Any suggestions provided are advise only. As no control can be exercised over weather, plant or soil conditions before, during or after the publishing of this report (all of which may affect the seasonal outcome) no responsibility for, or liability for any failure in performance, losses, damages, injuries (consequential or otherwise) arising will be accepted under any circumstances whatsoever. All program suggestions are based on previous experience with similar crops and soil conditions and are made in good faith.

Block 1 Merlot

Vine Growth / Canopy & Crop

EL Stage
32
Tip Growth
Strong, slowing.
Canopy Height x Width (av. - cm)
100 x 70 cm
Canopy Lifting
First lift done
Canopy & Crown Density (thinning requirements)
Some dense canopy and crowns
Leaf Colour
Good
Leaf Loss (shading or stress)
Some
Watershoot Growth
Some heavy watershoot growth
Fruit / Inflorescence Density, Overcropping, Bunch Size & Condition
Medium to large bunches, light to medium density some hen and chicken, some gaps- canes not meeting
Frost or Cold Damage
No

Pest, Disease & Nutrition

Powdery Mildew
0
Downy Mildew (oil spots or active infection)
0
Downy Mildew (old infection)
0
Botrytis (leaf or bunch)
No
LBAM (webbing / moths / eggs / caterpillars)
Not sighted
Scale (adults, eggs, crawlers)
Not sighted
Snails
Some common white snails
Mites
No
Weevils
Not sighted
Eutypa
Not showing up on the canes
Diaporthe
No
Phomopsis
No
Nutrient Deficiency / Toxicity
No
Beneficials
Not sighted

Soil, Irrigation, Sward, Trellis, Other

Soil Moisture / Cracks, Recent Irrigation / Precipitation
Good with recent rain
Irrigation System (Leaks, blocked emitters etc.)
N/a
Weed Growth (vine rows)
Grass and broadleaf including thistle
Weed Growth (mid rows)
Some broadleaf
Sward Length (rows / headlands)
Slashed
Broken Posts (intermediate, strainers)
N/a
Broken Wires
N/a

Block 3 Sangiovese

Vine Growth / Canopy & Crop

EL Stage
33
Tip Growth
Slowing
Canopy Height x Width (av. - cm)
90 x 60 cm
Canopy Lifting
Lifted
Canopy & Crown Density (thinning requirements)
Generally light, some dense crowns.
Leaf Colour
Good
Leaf Loss (shading or stress)
Some
Watershoot Growth
Watershoots flagged/removed
Fruit / Inflorescence Density, Overcropping, Bunch Size & Condition
Medium size bunches, light density, some hen and chicken.
Frost or Cold Damage
No

Pest, Disease & Nutrition

Powdery Mildew
0
Downy Mildew (oil spots or active infection)
0
Downy Mildew (old infection)
0
Botrytis (leaf or bunch)
No
LBAM (webbing / moths / eggs / caterpillars)
Not sighted
Scale (adults, eggs, crawlers)
Not sighted
Snails
Not sighted
Mites
No
Weevils
Not sighted
Eutypa
Not showing up on the canes
Diaporthe
No
Phomopsis
No
Nutrient Deficiency / Toxicity
No
Beneficials
Not sighted

Soil, Irrigation, Sward, Trellis, Other

Soil Moisture / Cracks, Recent Irrigation / Precipitation
Good with recent rain
Irrigation System (Leaks, blocked emitters etc.)
N/a
Weed Growth (vine rows)
Some grass and broadleaf including blackberry, thistle.
Weed Growth (mid rows)
Some broadleaf including blackberry
Sward Length (rows / headlands)
Recently slashed
Broken Posts (intermediate, strainers)
N/a
Broken Wires
N/a

Blocks 2 & 4a Cabernet Sauvignon

Vine Growth / Canopy & Crop

EL Stage
32
Tip Growth
Slowing
Canopy Height x Width (av. - cm)
100 x 70 cm
Canopy Lifting
Lifted
Canopy & Crown Density (thinning requirements)
Some dense crowns
Leaf Colour
Good
Leaf Loss (shading or stress)
Some
Watershoot Growth
Some heavy watershoot growth
Fruit / Inflorescence Density, Overcropping, Bunch Size & Condition
Medium size bunches, medium spread, some gaps- canes not meeting, some uneven ripening.
Frost or Cold Damage
No

Pest, Disease & Nutrition

Powdery Mildew
0
Downy Mildew (oil spots or active infection)
0
Downy Mildew (old infection)
0
Botrytis (leaf or bunch)
No
LBAM (webbing / moths / eggs / caterpillars)
Not sighted
Scale (adults, eggs, crawlers)
Not sighted
Snails
Not sighted
Mites
No
Weevils
Not sighted, some signs of damage.
Eutypa
Not showing up on the canes
Diaporthe
No
Phomopsis
No
Nutrient Deficiency / Toxicity
No
Beneficials
Not sighted

Soil, Irrigation, Sward, Trellis, Other

Soil Moisture / Cracks, Recent Irrigation / Precipitation
Good with recent rain
Irrigation System (Leaks, blocked emitters etc.)
N/a
Weed Growth (vine rows)
Some grass and broadleaf including thistle
Weed Growth (mid rows)
Some broadleaf
Sward Length (rows / headlands)
Slashed
Broken Posts (intermediate, strainers)
N/a
Broken Wires
N/a

Block 4b Shiraz

Vine Growth / Canopy & Crop

EL Stage
32
Tip Growth
Strong, slowing.
Canopy Height x Width (av. - cm)
100 x 70 cm
Canopy Lifting
Lifted
Canopy & Crown Density (thinning requirements)
Some dense crowns
Leaf Colour
Good
Leaf Loss (shading or stress)
Some
Watershoot Growth
Some heavy watershoot growth
Fruit / Inflorescence Density, Overcropping, Bunch Size & Condition
Medium size bunches, light to medium density, some gaps where canes not meeting
Frost or Cold Damage
No

Pest, Disease & Nutrition

Powdery Mildew
0
Downy Mildew (oil spots or active infection)
0
Downy Mildew (old infection)
0
Botrytis (leaf or bunch)
No
LBAM (webbing / moths / eggs / caterpillars)
Not sighted
Scale (adults, eggs, crawlers)
Not sighted
Snails
Not sighted
Mites
No
Weevils
Not sighted
Eutypa
Not showing up on the canes
Diaporthe
No
Phomopsis
No
Nutrient Deficiency / Toxicity
No
Beneficials
Not sighted
Notes
Leaf collected to test for Downy mildew (not active)

Soil, Irrigation, Sward, Trellis, Other

Soil Moisture / Cracks, Recent Irrigation / Precipitation
Good with recent rain
Irrigation System (Leaks, blocked emitters etc.)
N/a
Weed Growth (vine rows)
Some grass and broadleaf including blackberry, thistle, nightshade.
Weed Growth (mid rows)
Some broadleaf
Sward Length (rows / headlands)
Recently slashed
Broken Posts (intermediate, strainers)
N/a
Broken Wires
N/a

Block 5a Sauvignon Blanc

Vine Growth / Canopy & Crop

EL Stage
32
Tip Growth
Strong, slowing.
Canopy Height x Width (av. - cm)
110 x 70 cm
Canopy Lifting
Lifted
Canopy & Crown Density (thinning requirements)
Some dense canopy and crowns
Leaf Colour
Good
Leaf Loss (shading or stress)
Some
Watershoot Growth
Some heavy watershoot growth
Fruit / Inflorescence Density, Overcropping, Bunch Size & Condition
Medium medium size bunches, medium density some hen and chicken - not much.
Frost or Cold Damage
No

Pest, Disease & Nutrition

Powdery Mildew
0
Downy Mildew (oil spots or active infection)
0
Downy Mildew (old infection)
0
Botrytis (leaf or bunch)
No
LBAM (webbing / moths / eggs / caterpillars)
Not sighted
Scale (adults, eggs, crawlers)
Not sighted
Snails
Not sighted
Mites
No
Weevils
Not sighted
Eutypa
Covered by canopy
Diaporthe
No
Phomopsis
No
Nutrient Deficiency / Toxicity
No
Beneficials
Not sighted
Notes
Some leaves collected to test for Downy Mildew- not active.

Soil, Irrigation, Sward, Trellis, Other

Soil Moisture / Cracks, Recent Irrigation / Precipitation
Good with recent rain
Irrigation System (Leaks, blocked emitters etc.)
N/a
Weed Growth (vine rows)
Some grass returning
Weed Growth (mid rows)
Some broadleaf
Sward Length (rows / headlands)
30 cm
Broken Posts (intermediate, strainers)
N/a
Broken Wires
N/a

Blocks 5b & 5c Shiraz

Vine Growth / Canopy & Crop

EL Stage
32
Tip Growth
Slowing
Canopy Height x Width (av. - cm)
100 x 70 cm
Canopy Lifting
Lifted
Canopy & Crown Density (thinning requirements)
Some dense crowns
Leaf Colour
Good
Leaf Loss (shading or stress)
Some
Watershoot Growth
Some watershoots
Fruit / Inflorescence Density, Overcropping, Bunch Size & Condition
Small to medium size bunches, light density.
Frost or Cold Damage
No

Pest, Disease & Nutrition

Powdery Mildew
0
Downy Mildew (oil spots or active infection)
0
Downy Mildew (old infection)
0
Botrytis (leaf or bunch)
No
LBAM (webbing / moths / eggs / caterpillars)
Not sighted
Scale (adults, eggs, crawlers)
Not sighted
Snails
Not sighted
Mites
No
Weevils
Not sighted
Eutypa
No
Diaporthe
No
Phomopsis
No
Nutrient Deficiency / Toxicity
Some symptoms- salt?
Beneficials
Not sighted

Soil, Irrigation, Sward, Trellis, Other

Soil Moisture / Cracks, Recent Irrigation / Precipitation
Good with recent rain
Irrigation System (Leaks, blocked emitters etc.)
N/a
Weed Growth (vine rows)
Some grass and broadleaf including thistle
Weed Growth (mid rows)
Some broadleaf
Sward Length (rows / headlands)
Recently slashed
Broken Posts (intermediate, strainers)
N/a
Broken Wires
N/a

Block 6 Merlot

Vine Growth / Canopy & Crop

EL Stage
33
Tip Growth
Slowing
Canopy Height x Width (av. - cm)
100 x 70 cm
Canopy Lifting
Lifted
Canopy & Crown Density (thinning requirements)
Some dense canopy and crowns
Leaf Colour
Good
Leaf Loss (shading or stress)
Some
Watershoot Growth
Some heavy patches
Fruit / Inflorescence Density, Overcropping, Bunch Size & Condition
Medium size bunches, medium density.
Frost or Cold Damage
No

Pest, Disease & Nutrition

Powdery Mildew
0
Downy Mildew (oil spots or active infection)
0
Downy Mildew (old infection)
0
Botrytis (leaf or bunch)
No
LBAM (webbing / moths / eggs / caterpillars)
Not sighted
Scale (adults, eggs, crawlers)
Not sighted
Snails
Not sighted
Mites
No
Weevils
Not sighted
Eutypa
Some patches
Diaporthe
No
Phomopsis
No
Nutrient Deficiency / Toxicity
No
Beneficials
Not sighted

Soil, Irrigation, Sward, Trellis, Other

Soil Moisture / Cracks, Recent Irrigation / Precipitation
Good with recent rain
Irrigation System (Leaks, blocked emitters etc.)
N/a
Weed Growth (vine rows)
Some grass and broadleaf, fairly clean.
Weed Growth (mid rows)
Some broadleaf
Sward Length (rows / headlands)
Recently slashed
Broken Posts (intermediate, strainers)
N/a
Broken Wires
N/a

Blocks 7, 8 & 9 Pinot Noir

Vine Growth / Canopy & Crop

EL Stage
34
Tip Growth
Slowing
Canopy Height x Width (av. - cm)
90 x 70 cm
Canopy Lifting
Lifted
Canopy & Crown Density (thinning requirements)
Some dense canopy and crowns
Leaf Colour
Good
Leaf Loss (shading or stress)
Some
Watershoot Growth
Some heavy watershoot growth
Fruit / Inflorescence Density, Overcropping, Bunch Size & Condition
Medium size bunches, medium density
Frost or Cold Damage
No
Notes
Beginning of veraison

Pest, Disease & Nutrition

Powdery Mildew
0
Downy Mildew (oil spots or active infection)
0
Downy Mildew (old infection)
0
Botrytis (leaf or bunch)
No
LBAM (webbing / moths / eggs / caterpillars)
Not sighted
Scale (adults, eggs, crawlers)
Not sighted
Snails
Not sighted
Mites
No
Weevils
Not sighted
Eutypa
Not showing up on the canes
Diaporthe
No
Phomopsis
No
Nutrient Deficiency / Toxicity
No
Beneficials
Ladybugs

Soil, Irrigation, Sward, Trellis, Other

Soil Moisture / Cracks, Recent Irrigation / Precipitation
Good with recent rain
Irrigation System (Leaks, blocked emitters etc.)
N/a
Weed Growth (vine rows)
Some grass and broadleaf including blackberry, thistle.
Weed Growth (mid rows)
Some broadleaf
Sward Length (rows / headlands)
Recently slashed
Broken Posts (intermediate, strainers)
N/a
Broken Wires
N/a

Images



Block 1 Merlot some hen and chicken



Block 1 Merlot some dense canopy and crowns, some sprawl, some heavy watershoot growth, undervine weeds, midrows slashed.



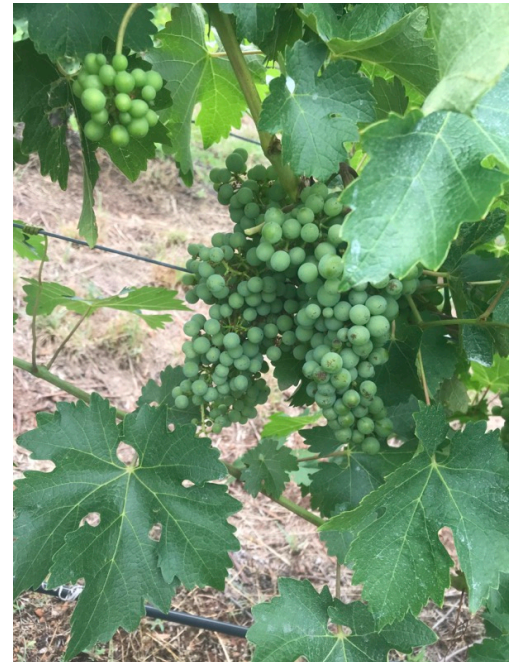
Common White Snail block 1 Merlot



Block 3 Sangiovese some hen and chicken



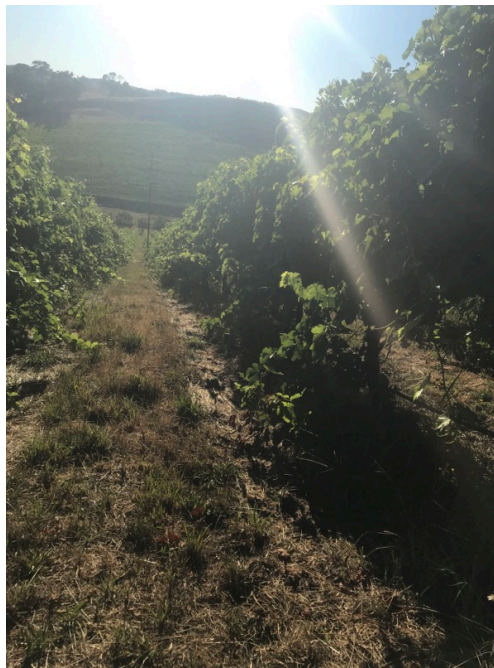
Block 3 Sangiovese generally light canopy some dense crowns, watershoots flagged/removed, some undervine and midrow blackberry



Cabernet block 2 fruit zone some uneven ripening



Cabernet block 4 some dense crowns, heavy watershoot growth, undervine weeds, midrows slashed



Shiraz 4B some dense crowns, watershoots, undervine weeds including blackberry and thistle, midrows recently slashed.



Shiraz 4B fruit zone some uneven ripening



Sauvignon Blanc 5a fruit zone some hen and chicken



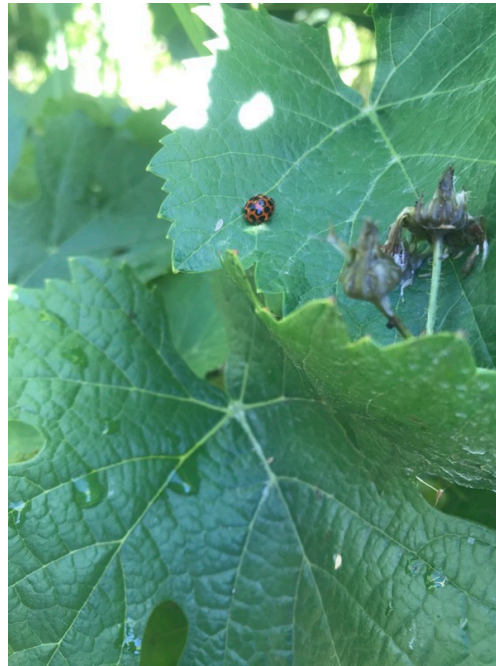
Sauvignon Blanc 5a some dense canopy, heavy watershoot growth, undervine grass.



Toxicity/deficiency? symptoms (salt?) Shiraz 4c. Some uneven bunch ripening.



Shiraz 4c some dense crowns, watershoots, undervine weeds including thistle, midrows recently slashed.



Ladybug block 9 Pinot



Pinot 9 bunch zone - beginning of Veraison, some hen and chicken.



Pinot 8 some dense crowns, heavy watershoots, undervine weeds including blackberry and thistle, midrows recently slashed.



Merlot 6 fruit zone



Merlot 6 some dense canopy and crowns, heavy watershoot growth, undervine weeds, midrows recently slashed.

Tunnel Hill Vineyard Map

