

# P&D Monitoring Report Tunnel Hill 2021-22

## Summary

**Date**  
20/12/2021

**Monitored By**  
Alex Mills

### Vineyard Summary

*Generally good growth with a medium spread of medium size bunches. Some dense canopy would benefit from thinning/trimming/hedging/leaf plucking. Some scale, snails, grasshoppers and earwigs sighted but there are no urgent pest and disease issues.*



*Looking over block 2 Cabernet to block 5 Sauvignon Blanc and Shiraz*



*Good bunch on healthy shoot block 8 Pinot*



*Looking over block 8 Pinot to block 9 Pinot*

### GPS Location

Author of this report is Group Logistics Pty Limited and its employees.

Disclaimer: Any suggestions provided are advise only. As no control can be exercised over weather, plant or soil conditions before, during or after the publishing of this report (all of which may affect the seasonal outcome) no responsibility for, or liability for any failure in performance, losses, damages, injuries (consequential or otherwise) arising will be accepted under any circumstances whatsoever. All program suggestions are based on previous experience with similar crops and soil conditions and are made in good faith.

## Block 1 Merlot

### Vine Growth / Canopy & Crop

**EL Stage**  
27  
**Tip Growth**  
Strong, some long internodes  
**Canopy Height x Width (av. - cm)**  
70 x 60 cm  
**Canopy Lifting**  
First lift done  
**Canopy & Crown Density (thinning requirements)**  
Some dense crowns  
**Leaf Colour**  
Good  
**Leaf Loss (shading or stress)**  
No  
**Watershoot Growth**  
Heavy  
**Fruit / Inflorescence Density, Overcropping, Bunch Size & Condition**  
Medium size bunches, light density, light spread  
**Frost or Cold Damage**  
No

### Pest, Disease & Nutrition

**Powdery Mildew**  
0  
**Downy Mildew (oil spots or active infection)**  
0  
**Downy Mildew (old infection)**  
0  
**Botrytis (leaf or bunch)**  
No  
**LBAM (webbing / moths / eggs / caterpillars)**  
Not sighted  
**Scale (adults, eggs, crawlers)**  
Not sighted  
**Snails**  
Some Pointed snails  
**Mites**  
No  
**Weevils**  
Not sighted  
**Eutypa**  
Not showing up on the canes  
**Diaporthe**  
No  
**Phomopsis**  
No  
**Nutrient Deficiency / Toxicity**  
No  
**Beneficials**  
Not sighted

### Soil, Irrigation, Sward, Trellis, Other

**Soil Moisture / Cracks, Recent Irrigation / Precipitation**  
Ok, drying out.  
**Irrigation System (Leaks, blocked emitters etc.)**  
N/a  
**Weed Growth (vine rows)**  
Some grass and broadleaf including Sow Thistle  
**Weed Growth (mid rows)**  
Some broadleaf  
**Sward Length (rows / headlands)**  
Slashed  
**Broken Posts (intermediate, strainers)**  
N/a  
**Broken Wires**  
N/. a

## Block 3 Sangiovese

### Vine Growth / Canopy & Crop

**EL Stage**  
28  
**Tip Growth**  
Generally strong, some long internodes  
**Canopy Height x Width (av. - cm)**  
70 x 60 cm  
**Canopy Lifting**  
Wires are down ready for lifting  
**Canopy & Crown Density (thinning requirements)**  
Some dense crowns  
**Leaf Colour**  
Good  
**Leaf Loss (shading or stress)**  
No  
**Watershoot Growth**  
Some heavy watershoots need flagging/removal  
**Fruit / Inflorescence Density, Overcropping, Bunch Size & Condition**  
Medium size bunches light spread, some gaps, some blind budding.  
**Frost or Cold Damage**  
No  
**Notes**  
Watershoots need to be flagged/removed

### Pest, Disease & Nutrition

**Powdery Mildew**  
0  
**Downy Mildew (oil spots or active infection)**  
0  
**Downy Mildew (old infection)**  
0  
**Botrytis (leaf or bunch)**  
No  
**LBAM (webbing / moths / eggs / caterpillars)**  
Not sighted  
**Scale (adults, eggs, crawlers)**  
Not sighted  
**Snails**  
Some pointed snails  
**Mites**  
No  
**Weevils**  
Not sighted, signs of earwig/grasshopper damage  
**Eutypa**  
No  
**Diaporthe**  
No  
**Phomopsis**  
No  
**Nutrient Deficiency / Toxicity**  
No  
**Beneficials**  
Not sighted

### Soil, Irrigation, Sward, Trellis, Other

**Soil Moisture / Cracks, Recent Irrigation / Precipitation**  
Good  
**Irrigation System (Leaks, blocked emitters etc.)**  
N/a  
**Weed Growth (vine rows)**  
Some grass and broadleaf including blackberry, thistle  
**Weed Growth (mid rows)**  
Some broadleaf including blackberry  
**Sward Length (rows / headlands)**  
Recently slashed  
**Broken Posts (intermediate, strainers)**  
N/a  
**Broken Wires**  
N/a

## Blocks 2 & 4a Cabernet Sauvignon

### Vine Growth / Canopy & Crop

**EL Stage**  
26  
**Tip Growth**  
Strong  
**Canopy Height x Width (av. - cm)**  
80 x 60 cm  
**Canopy Lifting**  
Wires are down ready for lifting  
**Canopy & Crown Density (thinning requirements)**  
Some dense crowns  
**Leaf Colour**  
Good  
**Leaf Loss (shading or stress)**  
No  
**Watershoot Growth**  
Heavy, needs flagging/removal  
**Fruit / Inflorescence Density, Overcropping, Bunch Size & Condition**  
Medium size bunches light to medium density, some gaps, some blind budding.  
**Frost or Cold Damage**  
No  
**Notes**  
Watershoots need to be flagged/removed

### Pest, Disease & Nutrition

**Powdery Mildew**  
0  
**Downy Mildew (oil spots or active infection)**  
0  
**Downy Mildew (old infection)**  
0  
**Botrytis (leaf or bunch)**  
No  
**LBAM (webbing / moths / eggs / caterpillars)**  
Not sighted  
**Scale (adults, eggs, crawlers)**  
Not sighted  
**Snails**  
Some Common White snails  
**Mites**  
No  
**Weevils**  
Not sighted, signs of damage  
**Eutypa**  
Not showing up on the canes  
**Diaporthe**  
No  
**Phomopsis**  
No  
**Nutrient Deficiency / Toxicity**  
No  
**Beneficials**  
Not sighted

### Soil, Irrigation, Sward, Trellis, Other

**Soil Moisture / Cracks, Recent Irrigation / Precipitation**  
Ok, drying out  
**Irrigation System (Leaks, blocked emitters etc.)**  
N/a  
**Weed Growth (vine rows)**  
Some grass and broadleaf  
**Weed Growth (mid rows)**  
Some broadleaf  
**Sward Length (rows / headlands)**  
Slashed  
**Broken Posts (intermediate, strainers)**  
N/a  
**Broken Wires**  
N/a

## Block 4b Shiraz

### Vine Growth / Canopy & Crop

**EL Stage**  
26  
**Tip Growth**  
Strong  
**Canopy Height x Width (av. - cm)**  
70 x 60 cm  
**Canopy Lifting**  
Wires are down ready for lifting.  
**Canopy & Crown Density (thinning requirements)**  
Some dense crowns  
**Leaf Colour**  
Good  
**Leaf Loss (shading or stress)**  
No  
**Watershoot Growth**  
Some heavy watershoots need flagging/removing.  
**Fruit / Inflorescence Density, Overcropping, Bunch Size & Condition**  
Medium size bunches light to medium density  
**Frost or Cold Damage**  
No

### Pest, Disease & Nutrition

**Powdery Mildew**  
0  
**Downy Mildew (oil spots or active infection)**  
0  
**Downy Mildew (old infection)**  
0  
**Botrytis (leaf or bunch)**  
No  
**LBAM (webbing / moths / eggs / caterpillars)**  
Not sighted  
**Scale (adults, eggs, crawlers)**  
Not sighted  
**Snails**  
Not sighted  
**Mites**  
No  
**Weevils**  
Not sighted  
**Eutypa**  
Not showing up on the canes  
**Diaporthe**  
No  
**Phomopsis**  
No  
**Nutrient Deficiency / Toxicity**  
No  
**Beneficials**  
Not sighted

### Soil, Irrigation, Sward, Trellis, Other

**Soil Moisture / Cracks, Recent Irrigation / Precipitation**  
Good  
**Irrigation System (Leaks, blocked emitters etc.)**  
N/a  
**Weed Growth (vine rows)**  
Some grass and broadleaf including thistle, blackberry.  
**Weed Growth (mid rows)**  
Some broadleaf  
**Sward Length (rows / headlands)**  
Slashed  
**Broken Posts (intermediate, strainers)**  
N/a  
**Broken Wires**  
N/a

## Block 5a Sauvignon Blanc

### Vine Growth / Canopy & Crop

**EL Stage**

27

**Tip Growth**

Good

**Canopy Height x Width (av. - cm)**

80 x 60 cm

**Canopy Lifting**

Wires are down ready for lifting

**Canopy & Crown Density (thinning requirements)**

Some dense canopy and crowns

**Leaf Colour**

Good

**Leaf Loss (shading or stress)**

No

**Watershoot Growth**

Some heavy patches

**Fruit / Inflorescence Density, Overcropping, Bunch Size & Condition**

Small to medium size bunches, medium density

**Frost or Cold Damage**

No

### Pest, Disease & Nutrition

**Powdery Mildew**

0

**Downy Mildew (oil spots or active infection)**

0

**Downy Mildew (old infection)**

0

**Botrytis (leaf or bunch)**

No

**LBAM (webbing / moths / eggs / caterpillars)**

Not sighted

**Scale (adults, eggs, crawlers)**

Not sighted

**Snails**

Not sighted

**Mites**

No

**Weevils**

Not sighted, some earwigs.

**Eutypa**

Some

**Diaporthe**

No

**Phomopsis**

No

**Nutrient Deficiency / Toxicity**

Some symptoms of deficiency/toxicity (salt)

**Beneficials**

Not sighted

### Soil, Irrigation, Sward, Trellis, Other

**Soil Moisture / Cracks, Recent Irrigation / Precipitation**

Good

**Irrigation System (Leaks, blocked emitters etc.)**

N/a

**Weed Growth (vine rows)**

Some grass and broadleaf, fairly clean.

**Weed Growth (mid rows)**

Some broadleaf,

**Sward Length (rows / headlands)**

Slashed

**Broken Posts (intermediate, strainers)**

N/a

**Broken Wires**

N/a

## Blocks 5b & 5c Shiraz

### Vine Growth / Canopy & Crop

**EL Stage**

27

**Tip Growth**

Generally strong, some long internodes.

**Canopy Height x Width (av. - cm)**

70 x 50 cm

**Canopy Lifting**

Wires are down

**Canopy & Crown Density (thinning requirements)**

Generally light density

**Leaf Colour**

Good

**Leaf Loss (shading or stress)**

No

**Watershoot Growth**

Fairly clean, some returning, needs a training pass

**Fruit / Inflorescence Density, Overcropping, Bunch Size & Condition**

Medium size bunches, light density.

**Frost or Cold Damage**

No

**Notes**

Needs a training pass.

### Pest, Disease & Nutrition

**Powdery Mildew**

0

**Downy Mildew (oil spots or active infection)**

0

**Downy Mildew (old infection)**

0

**Botrytis (leaf or bunch)**

No

**LBAM (webbing / moths / eggs / caterpillars)**

Not sighted

**Scale (adults, eggs, crawlers)**

Not sighted

**Snails**

Not sighted

**Mites**

No

**Weevils**

Not sighted, signs of damage

**Eutypa**

No

**Diaporthe**

No

**Phomopsis**

No

**Nutrient Deficiency / Toxicity**

Some symptoms of deficiency/ toxicity (salt?)

**Beneficials**

Not sighted

### Soil, Irrigation, Sward, Trellis, Other

**Soil Moisture / Cracks, Recent Irrigation / Precipitation**

Ok

**Irrigation System (Leaks, blocked emitters etc.)**

N/a

**Weed Growth (vine rows)**

Some grass and broadleaf including medic weed, thistle, marshmallow.

**Weed Growth (mid rows)**

Some broadleaf

**Sward Length (rows / headlands)**

Slashed

**Broken Posts (intermediate, strainers)**

N/a

**Broken Wires**

N/a

## Block 6 Merlot

### Vine Growth / Canopy & Crop

**EL Stage**

28

**Tip Growth**

Strong

**Canopy Height x Width (av. - cm)**

80 x 60 cm

**Canopy Lifting**

Wires are down, ready for lifting

**Canopy & Crown Density (thinning requirements)**

Some dense canopy and crowns

**Leaf Colour**

Good

**Leaf Loss (shading or stress)**

No

**Watershoot Growth**

Dense

**Fruit / Inflorescence Density, Overcropping, Bunch Size & Condition**

Medium size bunches medium density

**Frost or Cold Damage**

No

### Pest, Disease & Nutrition

**Powdery Mildew**

0

**Downy Mildew (oil spots or active infection)**

0

**Downy Mildew (old infection)**

0

**Botrytis (leaf or bunch)**

No

**LBAM (webbing / moths / eggs / caterpillars)**

Not sighted

**Scale (adults, eggs, crawlers)**

Not sighted

**Snails**

Not sighted

**Mites**

No

**Weevils**

No

**Eutypa**

Some

**Diaporthe**

No

**Phomopsis**

No

**Nutrient Deficiency / Toxicity**

No

**Beneficials**

Not sighted

### Soil, Irrigation, Sward, Trellis, Other

**Soil Moisture / Cracks, Recent Irrigation / Precipitation**

Good

**Irrigation System (Leaks, blocked emitters etc.)**

N/a

**Weed Growth (vine rows)**

Fairly clean, some grass and broadleaf including thistle.

**Weed Growth (mid rows)**

Some broadleaf

**Sward Length (rows / headlands)**

Slashed

**Broken Posts (intermediate, strainers)**

N/a

**Broken Wires**

N/a



## Blocks 7, 8 & 9 Pinot Noir

### Vine Growth / Canopy & Crop

**EL Stage**

29

**Tip Growth**

Strong, some long internodes.

**Canopy Height x Width (av. - cm)**

80 x 60 cm

**Canopy Lifting**

First lift done

**Canopy & Crown Density (thinning requirements)**

Some dense crowns

**Leaf Colour**

Good

**Leaf Loss (shading or stress)**

No

**Watershoot Growth**

Heavy needs flagging/removal

**Fruit / Inflorescence Density, Overcropping, Bunch Size & Condition**

Medium size bunches medium spread, some gaps, some blind budding.

**Frost or Cold Damage**

No

### Pest, Disease & Nutrition

**Powdery Mildew**

0

**Downy Mildew (oil spots or active infection)**

0

**Downy Mildew (old infection)**

0

**Botrytis (leaf or bunch)**

No

**LBAM (webbing / moths / eggs / caterpillars)**

Not sighted

**Scale (adults, eggs, crawlers)**

Some

**Snails**

Not sighted

**Mites**

No

**Weevils**

Some leaf damage- weevils? earwigs? grasshoppers? - not sighted.

**Eutypa**

Not showing up on the canes

**Diaporthe**

No

**Phomopsis**

No

**Nutrient Deficiency / Toxicity**

No

**Beneficials**

Not sighted

### Soil, Irrigation, Sward, Trellis, Other

**Soil Moisture / Cracks, Recent Irrigation / Precipitation**

Good

**Irrigation System (Leaks, blocked emitters etc.)**

N/a

**Weed Growth (vine rows)**

Some grass and broadleaf including blackberry, thistle.

**Weed Growth (mid rows)**

Some broadleaf

**Sward Length (rows / headlands)**

Slashed

**Broken Posts (intermediate, strainers)**

N/a

**Broken Wires**

N/a

## Images



*Block 1 Merlot some dense crowns, heavy watershoots, undervine grass and broadleaf including sow thistle, midrows slashed.*



*Block 3 Sangiovese some dense crowns, watershoots, undervine weeds including blackberry, thistle.*



*Pointed snail block 3*



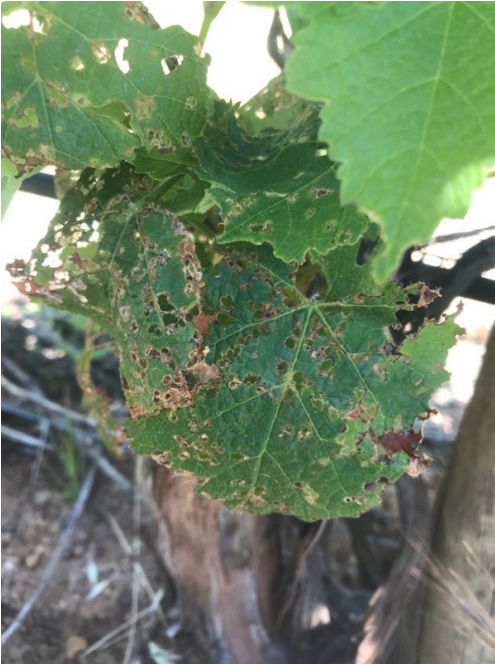
*Block 2 Cabernet some dense crowns, watershoots, undervine weeds including blackberry, and nightshade*



*Good bunches on healthy shoots block 2 Cabernet*



*Block 5 Shiraz canopy needs lifting, some watershoots, undervine weeds, midrows slashed.*



*Weevil? damage block 2 Cabernet (not sighted. ).*



*Block 4A Cabernet some dense watershoots, undervine weeds, slashed midrows.*



*Block 4B Shiraz some dense crowns, heavy watershoots, undervine grass and broadleaf, midrows slashed.*



*Block 4B Shiraz good bunches on a healthy shoot.*



*5a Shiraz deficiency/toxicity (salt?) symptoms*



*Block 5 undervine medic weed & thistle*



*Block 9 Pinot some dense crowns, heavy watershoots, undervine weeds, midrows slashed*



*Scale block 9 Pinot*



*Block 8 Pinot some dense crowns, watershoots, undervine weeds including blackberry, thistle, midrows slashed*



*Block 8 weevil damage? (Not sighted)*



*Block 6 Merlot dense canopy, dense watershoots, some undervine weeds including thistle, midrows slashed.*



*Block 7 Pinot some good bunches on healthy shoots*

## Tunnel Hill Vineyard Map

